

EPS

Consulting
für Finanzdienstleister

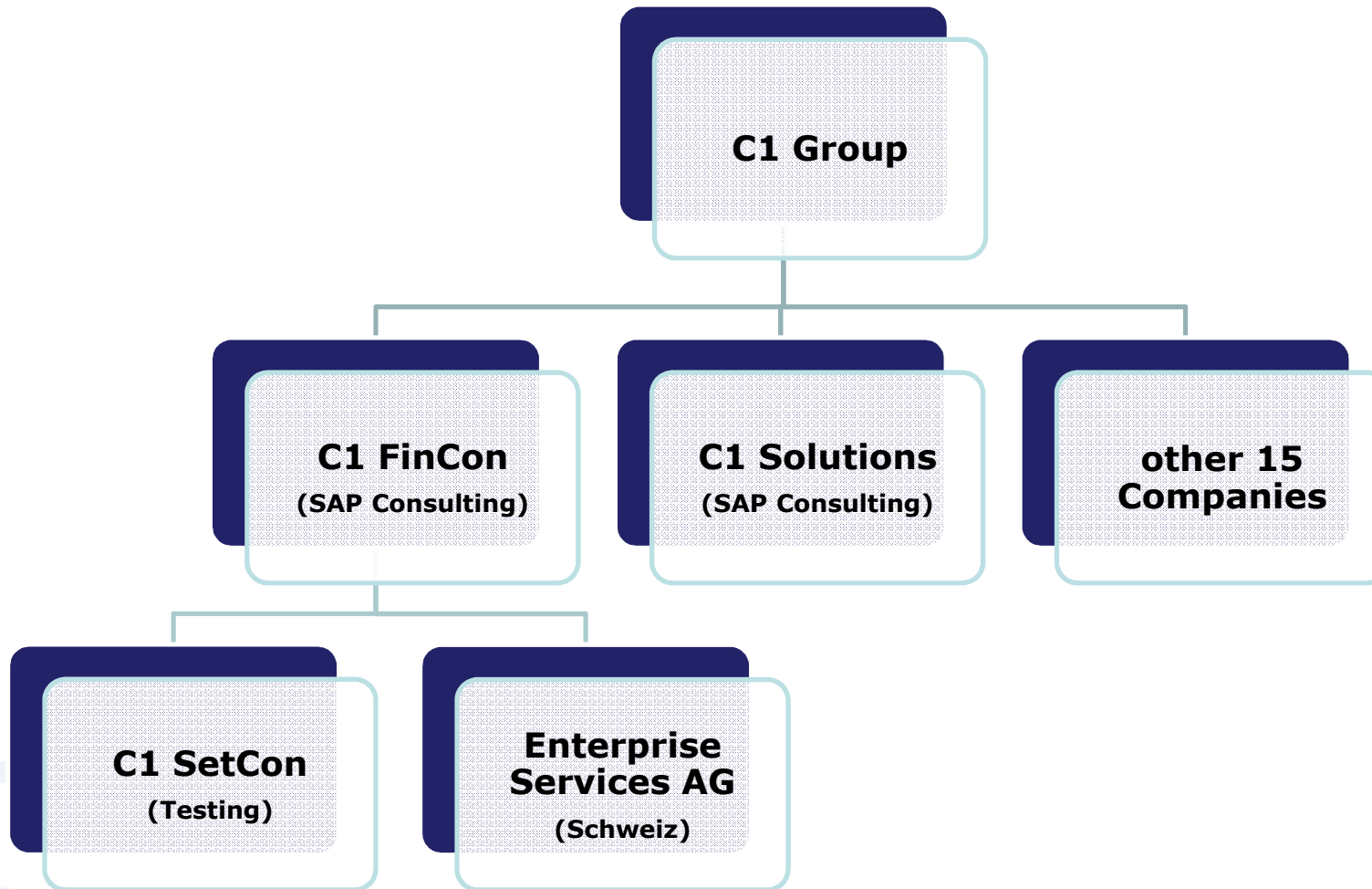
Enterprise Services AG

(nickname «EPS»)

March 2, 2011



C1 Group



C1 Group

EPS

Consulting
für Finanzdienstleister

- btconsult
- bws
- C1 Conexus
- C1 Financial Services
- C1 FinCon
- C1 IPS
- C1 SetCon
- C1 Solutions
- C1 WPS
- C3 Consulting Group
- Enterprise Services
- inconso
- pdv Financial Software
- pdv TAS
- Ponton Consulting
- psc



C1 Group

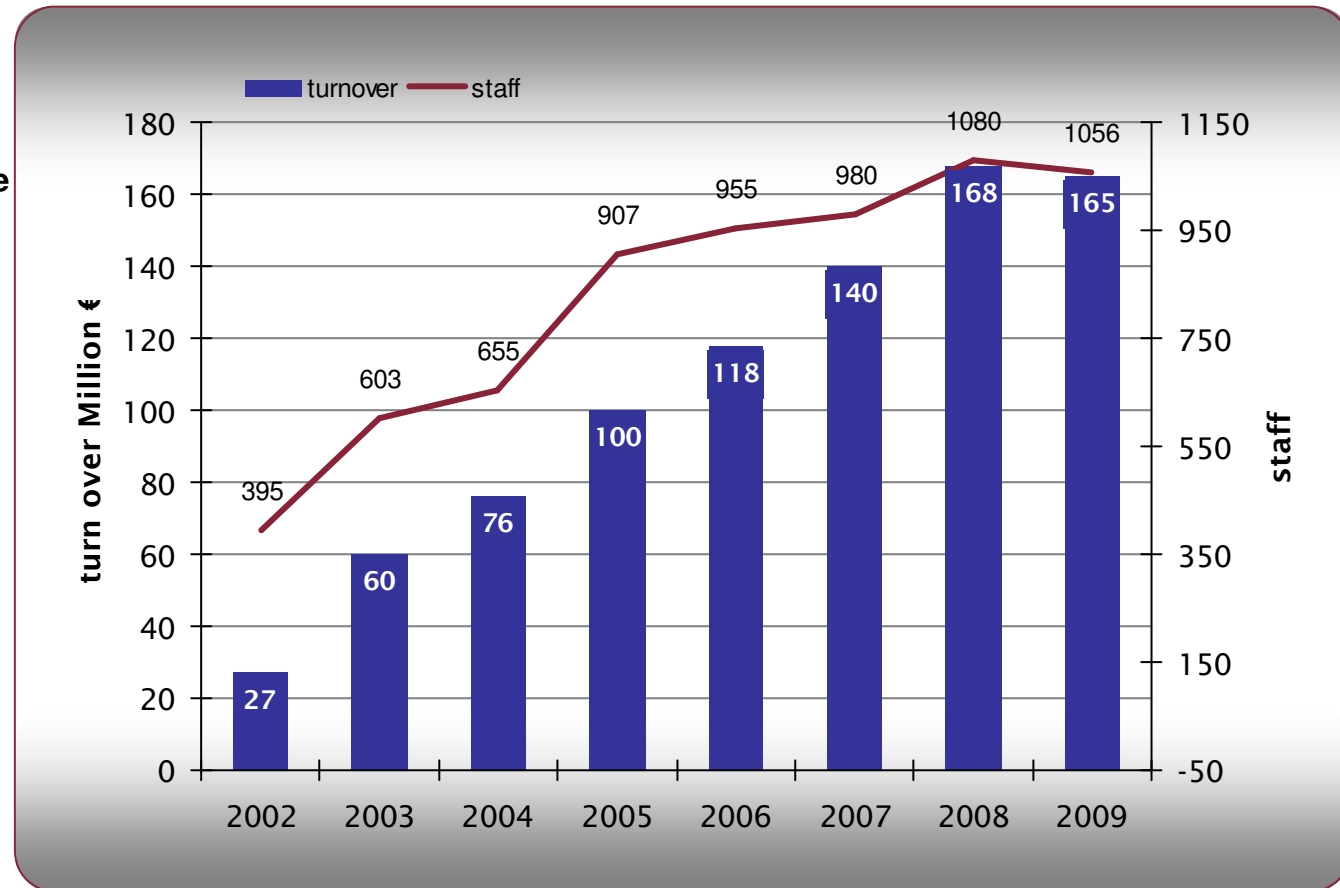
EPS

Consulting
für Finanzdienstleister

2009
16 companies with more
than 1'000 employees

2005
transaction volume of
more than 100 mio
EURO

2002
foundation
C1 Group



C1 FinCon

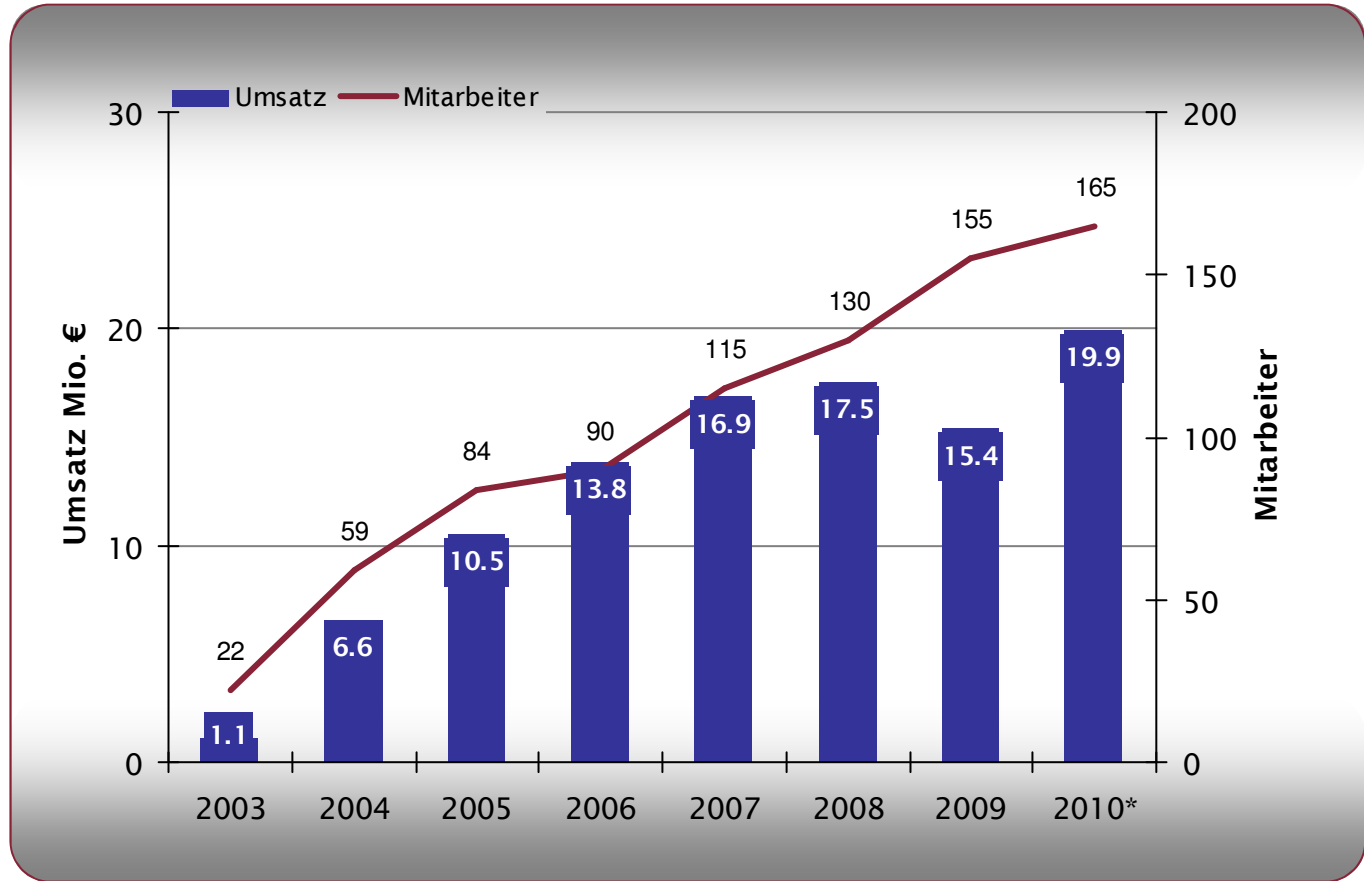


Consulting
für Finanzdienstleister

2007
C1 FinCon
takes over EPS

2005
foundation
C1 SetCon

2003
foundation
C1 FinCon



*) forecast

C1 Fincon Group



Consulting
für Finanzdienstleister

C1 FinCon Group		
C1 FinCon GmbH	C1 SetCon GmbH	Enterprise Services
Core Service Portfolio <ul style="list-style-type: none"> • Management- and IT-Consulting • Implementation of individual Application Systems • Implementation of Standard Products • Development and Distribution of Software Solutions 	Core Service Portfolio <ul style="list-style-type: none"> • Software Engineering • Project and Quality Management • Testmanagement • Performance Engineering 	Core Service Portfolio <ul style="list-style-type: none"> • Client Facing • Testfactory & BO Processes • Management Information Systems • Card Business • Management Consulting & Strategies
Focus on Branches	Focus on Branches	Focus on Branches
Banks and Insurance Companies	Across Industries	Banks and Insurance Companies including Card Business & Processors
Service and Technology Transfer		

Enterprise Services



Consulting
für Finanzdienstleister

2009
45 employees

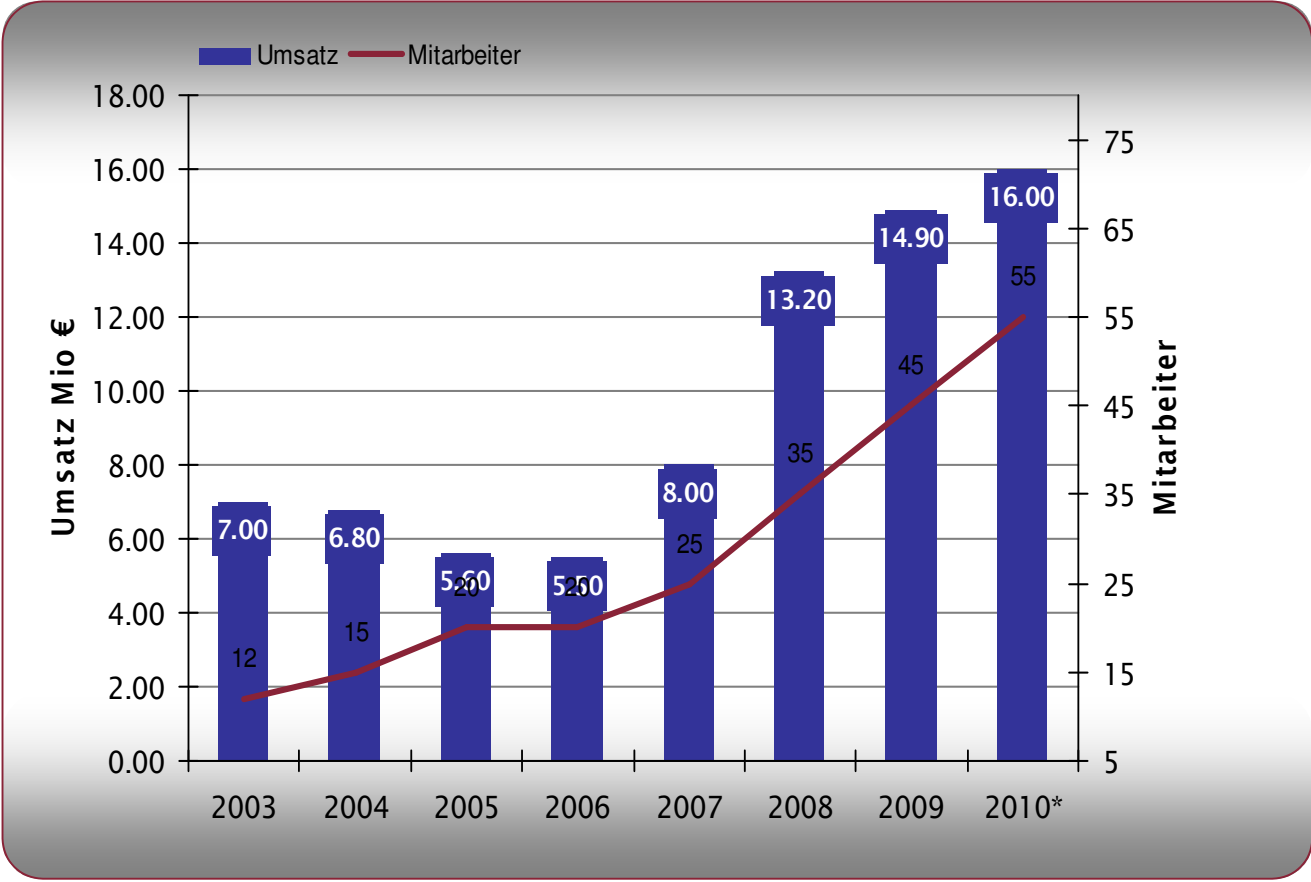
2008
turnover >
10 Mio CHF

2007
EPS joins C1 Group

2006
Business Unit
Finnova & Avaloq

2003
Partnership with SAP

1998
Foundation
Enterprise Services

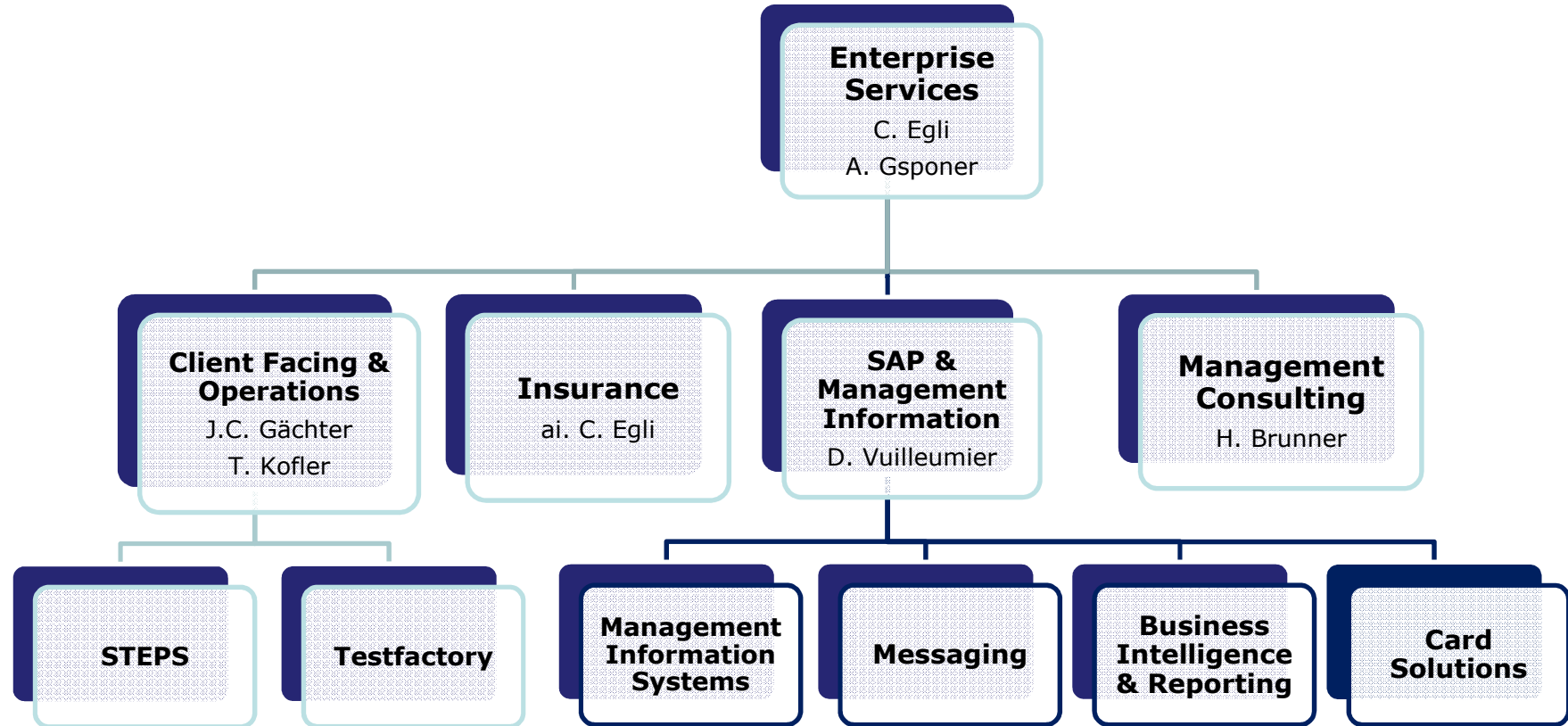


*) 2010 –Forecast

Structure



Consulting
für Finanzdienstleister



Contact

EPS

Consulting
für Finanzdienstleister

André Gsponer

Managing Partner
Enterprise Services AG
Gartenstrasse 59
CH-4010 Basel

Tel: +41 61 284 90 90

Fax: +41 61 284 90 92

Mail: andre.gsponer@eps-ag.ch

Carl Egli

Managing Partner
Enterprise Services AG
Gartenstrasse 59
CH-4010 Basel

Tel: +41 61 284 90 90

Fax: +41 61 284 90 92

Mail: carl.egli@eps-ag.ch

